



Sigurnosni ventil s direktnim opterećenjem
Safety valve with weight

Type SD 1

PN 16

STANDARDNA IZVEDBA
STANDARD DESIGN

KUĆIŠTE
BODY

GG-25/WNr. 0.6025
 CAST IRON EN-JL 1040

UNUTARNJI DIJELOVI
INNER PARTS

NEHRĐAJUĆI ČELIK
 STAINLESS STEEL

NAZIVNI OTVOR
NOMINAL DIAMETER

DN 32-50-100

NAZIVNI TLAK (bar)
NOMINAL PRESSURE

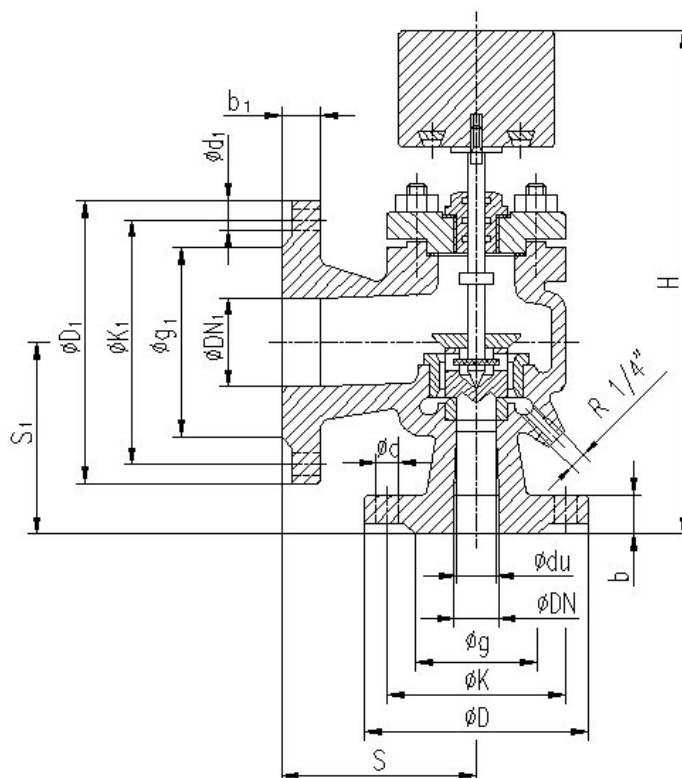
PN 16

TEMPERATURA
TEMPERATURE RANGE

DO 300°C
 TO 300°C



NAMJENA: VODA, PARA.



CONTENTS: WATER, STEAM.

DN	øD	øK	ød	n	H	S ₁	DN ₁	øD ₁	øK ₁	ød ₁	n ₁	S
32	140	100	18	4	370	110	50	165	125	18	4	100
50	165	125	18	4	533	145	80	200	160	18	8	125
100	220	180	18	4	513	175	100	220	180	18	8	175