



Ventil s mijehom
Bellows sealed globe valve

Type VM 2

PN 16

STANDARDNA IZVEDBA
STANDARD DESIGN

KUĆIŠTE
BODY

GG-25/ W.Nr. 0.6025
 CAST IRON EN-JL 1040

UNUTARNJI DIJELOVI
INNER PARTS

NEHRĐAJUĆI ČELIK
 STAINLESS STEEL

NAZIVNI OTVOR
NOMINAL DIAMETER

DN 15-200

NAZIVNI TLAK (bar)
NOMINAL PRESSURE

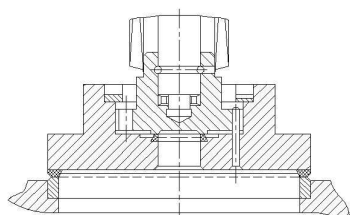
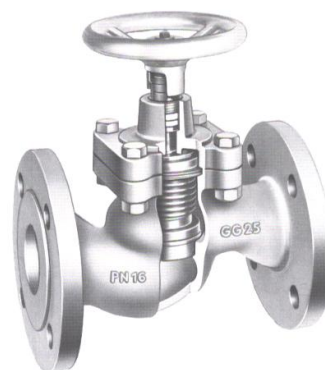
PN 16

TEMPERATURA
TEMPERATURE RANGE

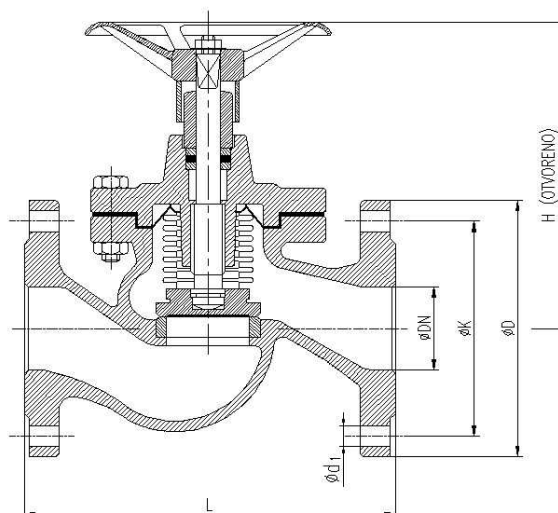
DO 300°C
 TO 300°C

SPAJANJE
CONNECTION

PRIRUBNICA DIN 2501
 FLANGES



PLADANJ DN 200



DN	L	H	øD	øK	øD ₁	n	masa weight kg
15	130	168	95	65	14	4	3
20	150	168	105	75	14	4	4
25	160	183	115	85	14	4	5,5
32	180	183	140	100	18	4	7
40	200	212,5	150	110	18	4	9
50	230	212,5	165	125	18	4	11
65	290	236,5	185	145	18	4	19
80	310	236,5	200	160	18	8	23
100	350	329	220	180	18	8	36
125	400	390	250	210	18	8	57
150	480	435	285	240	22	8	75
200	600	590	340	295	22	12	134